

# cecotec

## COFFEE 66 SMART PLUS

Cafetera de goteo/ Drip Coffee Machine



# Cumbia

Manual de instrucciones  
Instruction manual  
Manuel d'instructions  
Bedienungsanleitung  
Manuale di istruzioni  
Manual de instruções  
Instructiehandleiding  
Instrukcja obsługi  
Návod k použití

## 1. PARTS AND COMPONENTS

Fig. 1

1. Upper cover
2. Filter (2 pieces)
3. Funnel
4. Control panel
5. Jar lid
6. Jar
7. Jar handle
8. Heating plate
9. Water level indicator

Fig. 2

### Control panel

1. Hours setting
2. Minutes setting
3. Descaling
4. STRONG function
5. Daily scheduling
6. ON/OFF

## 2. BEFORE USE

- Take the product out of the box and remove all packaging materials.
- Make sure all parts and components are included and in good conditions. If any visible signs of damage are observed, contact the Technical Support Service immediately.
- Place the appliance on a flat, stable surface.
- Make sure the device is turned off and plug it to a power supply.
- Run 2 brewing cycles (see "Operation" section) without coffee or filters to clean the whole device before using it for the first time.

## 3. OPERATION

- Open the top lid and pour cold water (preferably bottled or filtered) into the tank. The number of cups is displayed on the water level indicator. Do not exceed the maximum fill level.

### Warning

It is not suggested to prepare less than 4 cups.

- Place the jar with the lid closed in the coffee maker making sure it is fully seated in the coffee maker to activate the Pause & Serve mechanism.

### Warning

Make sure the jar is properly fitted in the device and that the lid is on to avoid hot water or coffee from overflowing.

- With the top lid fully open, insert the filter into the funnel.
- Add coffee using a measuring spoon.

### Warning

The suggested quantity to brew a rich, full-bodied flavor coffee is one level scoop for each cup or 10 level scoops per full pot of coffee. Test with the amount of coffee used in order to adjust the quantity to your taste.

- Close the top cover again.
- With the lid firmly closed and the jar secured in place, press the On button. The red colour LED light will light up and flash, indicating the brewing cycle has started.

### Warning

Do not open the lid during the brewing cycle; even if no water is draining from the funnel. Extremely hot water/coffee can spill out from the device and cause injury. If water/coffee is not draining from the funnel, immediately unplug the unit and wait 10 minutes before opening and checking the filter.

- When the machine has finished brewing coffee and the water level indicator shows that the water level has run out, there will still be hot water/coffee in the funnel. Wait a few minutes for the rest of the liquid to drip through into the jar.
- The coffee machine will keep the coffee hot for 40 minutes after brewing is complete.
- After coffee grounds have cooled down, open the lid and carefully remove the filter
- To do this, hold the filter by the handle and pull it upwards out of the funnel. Dispose of used coffee grounds.

### Warning

Always switch the coffee maker off when the jar is empty or no more coffee has to be warmed up. The coffee maker will automatically shut off after 40 minutes.

If two or more jars of coffee are to be made it is recommended to allow the coffee machine to

cool down for 10 minutes between each brewed pot. The filter should also be rinsed out after each brew cycle.

#### **Coffee brewing**

- Making coffee automatically (Normal)
- Press the On/Off button. The coffee maker will brew coffee immediately. The red LED light will flash indicating the machine is brewing coffee. When the red LED light turns to steady, it means the cup-warming function is activated. The coffee maker will automatically shut off after 40 minutes.

#### **Warning**

Press the ON/OFF button again if you want to switch off the machine at any time.

#### **Automatic coffee scheduling**

- Press the HOUR and then the MIN buttons to set the current time.
- Press and hold the buttons to scroll through the numbers quickly. When the number displayed approaches the desired setting, press the button to advance one digit at a time.
- To set the desired auto-brew start time, first press the PROG button.
- Set the time you want coffee to begin brewing by using the HOUR and MIN buttons following the same steps as the before point.
- Once it has been set, the green light will flash and the LCD display will show "AUTO".
- The coffee maker will automatically begin brewing at the pre-set time. When the brew cycle begins, the red light will flash to indicate the coffee maker is operating.
- Press the PRO button for 3 second to cancel the auto-brew preset mode.

#### **"Strong" function**

- This function is designed to brew strong and more intense coffee.
- Press the STRONG button for the machine to automatically operate under this function.
- From the "Normal" function, press this button to switch the machine to Strong function. The brewing process will take longer.

#### **Pause & serve (AUTOMATIC FUNCTION)**

This function allows you to interrupt the brewing cycle and pour a cup of coffee before the entire jar is finished brewing. When the jar is removed, the appliance will automatically stop dripping coffee.

#### **Warning**

The maximum time the jar can be removed is 30 seconds. Do not exceed this time. When replacing the carafe, make sure that it is securely attached to the bottom of the machine and that the valve is left open, allowing coffee to flow out again.

## **4. CLEANING AND MAINTENANCE**

- Always unplug the coffee maker and allow it to cool down before cleaning.
- Clean the jar, lid, filter and funnel with soap and water. These pieces can also be washed on the top rack of the dishwasher.
- Never use harsh or abrasive cleaners on any part of your coffee maker. To clean, simply wipe off with a soft, damp cloth. For hard to remove stains, use a plastic mesh pad or cloth damped in vinegar.

#### **Warning**

Never immerse the warming plate or main housing in water or any other liquid. Do not try to clean the inside part of water tank with a cloth. This will leave a residue of lint and may clog your coffee maker. Just rinse with cold water periodically.

#### **Descaling cycle**

- Calc build-up frequently occurs in drip coffee makers. This build-up is normal and is caused by minerals commonly found in drinking water.
- Periodically, your coffee maker will need cleaning to remove scale or mineral deposits that may form.
- You will know when your unit will need descaling when you notice an obvious slow down in brewing time.
- It is recommended to descale the unit with a solution of white vinegar and cold water. A solution of two tablespoons of white vinegar to one jar of cold bottled water works best.
- Pour this solution into the water tank, and follow your normal operating instructions, without a filter in the filter holder.
- Press the DESCALE button. When the brew cycle is finished, empty the jar and rinse with water.
- Refill the water tank with cold clean water only and repeat the brew cycle with water only, twice more. This will rinse out any remaining vinegar solution. It is recommended to carry out this cycle 4 times a year approx.

#### **Warning**

The coffee maker will light up the green indicator after 60 uses as a reminder that the machine has to be cleaned. Press the DESCALE button during standby mode to clean it. The light will only turn off when the coffee maker is clean.

## 5. RECOMMENDATIONS

- Keep the coffee maker always clean. In order to obtain high-quality coffee with good flavour, the coffee maker must be clean.
- It is recommended to use bottled water when using the appliance.
- For a full-bodied flavour coffee, by whole coffee beans and grind them just before use.
- Store ground coffee in a cool, dry place. After opening a package of ground coffee, reseal it tightly and store it in a refrigerator to maintain its freshness.
- Do not reuse ground coffee.
- Do not reheat coffee. Coffee reaches its best fragrance and flavour just after being freshly brewed.
- Some coffee oil or fat could build up due to ground coffee extraction. This could happen frequently when using strongly roasted coffee.

## 6. TECHNICAL SPECIFICATIONS

Model: Coffee 66 Smart Plus  
 Product reference: 01999  
 950 W, 220-240 V~, 50-60 Hz  
 Made in China | Designed in Spain

## 7. DISPOSAL OF OLD ELECTRICAL APPLIANCES



This symbol indicates that, according to the applicable regulations, the product and/or battery must be disposed of separately from household waste. When this product reaches the end of its shelf life, you should dispose of the batteries/accumulators and take them to a collection point designated by the local authorities.

Consumers must contact their local authorities or retailer for information concerning the correct disposal of old appliances and/or their batteries.

Compliance with the above guidelines will help protecting the environment.

## 8. TECHNICAL SUPPORT AND WARRANTY

Cecotec shall be liable to the end user or consumer for any lack of conformity that exists at the time of delivery of the product under the terms, conditions, and deadlines established by the applicable regulations.

It is recommended that repairs be carried out by qualified personnel.

If at any moment you detect any problem with your product or have any doubt, do not hesitate to contact Cecotec official Technical Support Service at +34 96 321 07 28.

## 9. COPYRIGHT

The intellectual property rights over the texts in this manual belong to CECOTEC INNOVACIONES, S.L. All rights reserved. The contents of this publication may not, in whole or in part, be reproduced, stored in a retrieval system, transmitted, or distributed by any means (electronic, mechanical, photocopying, recording or similar) without the prior authorization of CECOTEC INNOVACIONES, S.L.

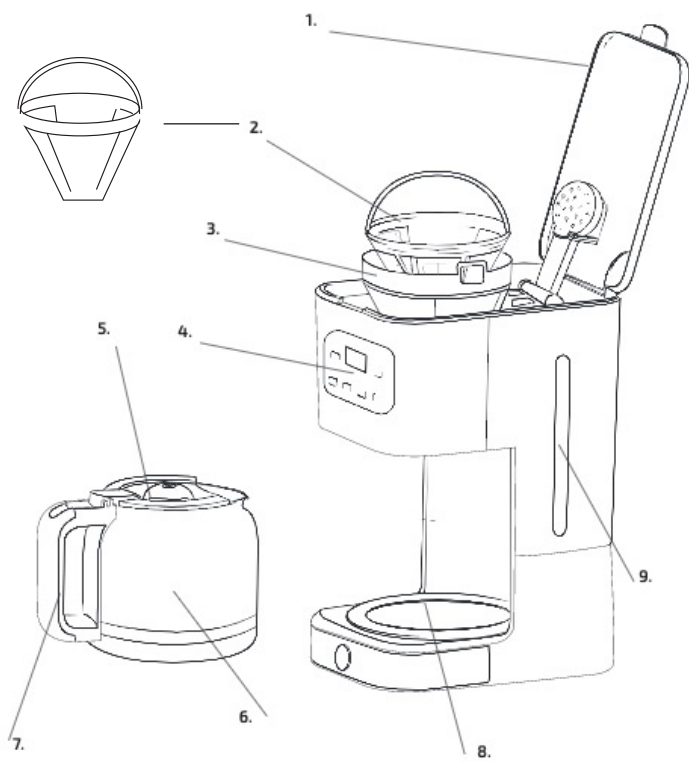


Fig./Img./Abb./Afb./ Rys./Obr. 1

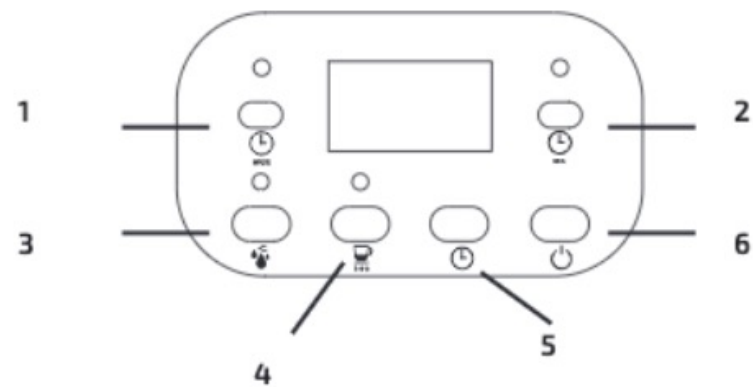


Fig./Img./Abb./Afb./ Rys./Obr.2

[www.cecotec.es](http://www.cecotec.es)

Cecotec Innovaciones S.L.  
C/ de la Pinadeta s/n, 46930  
Quart de Poblet, Valencia (Spain)  
EA01220708